

*Mile High Polymer Clay Guild Newsletter*  
*Summer 2010*      *www.mhpcg.org*

*Peg says ...*

Now Spring just started and already the Summer Solstice has come and gone? That's just wrong! Gary and I have moved to Longmont where we're very happy with our 'new' apartment & enjoying being closer to friends and business.

Our May workshop with Lynne Anne Schwarzenberg was wonderful. She is a very generous instructor and all of us who were fortunate to be there learned tips and tricks that will save us loads of time & clay. Our Retreat was great again this year. It just gets better and better, doesn't it? Be sure to check out the many pictures on our guild Facebook page.

I'm off for the summer. Our own dear Clare Pramuk will be stepping in for me while she's available. You be nice to her! Don't make me send her my whistle and bull horn! It does warm my heart to watch you all visiting and sharing with each other every month. Just let Clare get a word in here and there so that you're informed about what's going on in the group.

I'll see you all in the Fall, if not sooner.

Happy Claying!

*Peg*

*Clare's two cents worth ...*

I'm looking forward to being more involved with the guild this summer as "Summer President" or "Temporary Peg". I have always benefited from the positive energy and encouragement from this group & am happy to give back. We have a great group of leaders and members who give freely of their time and knowledge. Be sure and remember to thank them.

If you don't know me well, I've been working with polymer clay for at least 5 years & had my first class with Kathleen Dustin the Spring of 2006. This was actually before I moved to Colorado from Texas. I don't really know when I started but I can't imagine not having polymer clay in my life. I don't have my own style, at least not yet, and enjoy exploring the many techniques that are out there. I find that reading a book or attending a demonstration, class or workshop on something I already know will always give me some unexpected nugget of information that expands my knowledge.

I just returned from a week in northern New Mexico in the area where Georgia O'Keefe completed many of her masterpieces. It was a very spiritual week for me so expect to see some 'inspired' pieces coming from my direction. I just have to hold onto that inspiration & get my studio cleaned up!

Namaste,

*Clare*



## Exploring the Rainbow with Tina Holdman

### Mountain Cool Colors

This is half a collection of cool colors that will nicely fill out your color sample collection. They are designed to go with the Mountain Cool Water Collection of recipes that will be published down the road if they have not been published thus far. I would love to say that these collections were the result of looking at my sample collection and realizing that a few more cool colors were needed to nicely plump out those parts that were thin but alas, I have to admit that it was primarily self interest that drove me. Yes, my guild sisters and occasional brother, I have strayed from the field and have cheated with another craft form.

Oh please, I know you have some, ur, side interests as well. Felting, quilting, beading and yes,

an occasional weaver like my own bad self are out there. While I cannot say that I am a prolific weaver, I will dust off my loom & warp something on once in a great while. And it has led, to my defense, to not one, but two lovely collections of greens, blues & purples.

I was at the weaving store & started putting together a pile of cone & ball yarn to match a mixed yarn of blues & purples and before I knew it, I was looking at a pile of absolutely delicious colors. I got a bit of each to warp into a scarf. Or two or three. The clay colors will probably go into a project before I actually get to making the scarf, but there it is, I am most faithful to clay in the end of things.

*Premo colors you will need to mix this collection are: Turquoise, Ecru, White, Cobalt, Green, Sea Green, Ultramarine Blue, Purple and Black.*



#### #1 Light Bluish Green

4 parts Premo Turquoise  
3 parts Premo Ecru  
1 part Premo White

#### #2 Medium Clean Green

2 parts Premo Turquoise  
2 parts Premo Cobalt  
1 part Premo Green

#### #3 Medium Dark Greenish Blue

3 parts Cobalt Blue  
1 part Premo Sea Green  
1/2 part Premo White

#### #4 Medium Dark Blue

1 part Premo Turquoise  
1 part Premo Ultramarine

#### #7 Bonus—Medium Blue Purple

2 parts Premo Purple  
1 part Premo Turquoise  
1 part Premo Cobalt  
1 part Premo White

#### #5 Navy Blue

2 parts Premo Ultramarine  
1 part Premo Cobalt Blue  
1/4 part Premo Black

#### #6 Dark Luscious Purple

2 parts Premo Ultramarine  
1 part Premo Purple



# *Fabulous Organic Sculpture*

*...a two-day workshop with*

*Jana Roberts Benzon*

**Saturday and Sunday October 16th & 17th**

**Hampton Inn 137 Union Lakewood Colorado**

**Cost: \$200 (includes materials fee)**

**Send check made payable to MHPCG to: Sue Mueller**

**20 West Ranch Train Morrison, CO 80465**

*(Participants must be MHPCG members in good standing. Include \$30 if 2010-11 dues are not currently paid. Space is limited to 22 participants; check with Sue M. about space availability. (Suemuellersmail@aol.com))*

*"Join me for two days spent 'going with the flow' as we learn to create, ethereal, magical organic sculpture pieces with their delicate black outlining. This eye-catching, mesmerizing feature helps give these creations their distinguishing look. This workshop has a wonderful mix of technical instruction & 'free-form' time. We will learn how to create glittering sea shell beads incorporating many of the basic skills for creating organics with a beautiful, sparkling exterior. We'll also learn to create a sea sculpture brooch with its rough, crustacean-like exterior and then the seahorse pendant with the beautiful (and mystifying!) technique that adorns its outer shell. If time, we'll also learn how to make a crumpled brooch, one of my favorites. You'll learn the basics of organics, several interesting shapes and designs along with several new surface techniques. This Master Workshop is full of free-form fun, relaxed 'in the zone' creating time and also filled with so much new & innovative polymer information. You'll leave feeling like your head is going to explode, in a good (organic) way!"*

*Jana Roberts Benzon*



# Guild News



We have many excellent VHS videos featuring favorite polymer clay artists & techniques. The majority of these tapes languish on our shelves because so many members no longer have VHS equipment. We plan to have a special showing each clay day following the business meeting. Members not wanting to watch can use the time for chatting or claying. Regular monthly demonstrations will follow the film. Tina G. is in charge of selection, so if you have a suggestion, let her know. And yes, we may even have popcorn!

The Board approved purchase of a Cloud Dome & plans to provide basic training for those interested in macro photography. We will be scheduling an orientation workshop and providing further information concerning using the equipment at clay days. If you have some skills in this area you'd be willing to share or if you'd like to be involved in the 'Cloud Dome Committee' please contact Karen Sexton (bobwire123@msn.com) or Clare Pramuk (clareonarope@yahoo.com).



*Time's up!* This is the last newsletter if your 2010-11 dues are not paid. The website password will change July 1st & only members in good standing will be sent the new one. Send \$30 check payable to MHPCG to Sue Mueller 20 West Ranch Trail, Morrison, Colorado 80465. PPGC members are eligible for associate dues (\$15). Don't know if you've paid? Ask Sue: suemuellers-mail@aol.com She knows!

## Equipment Rental Policy

Equipment for rent to members:

Polypress	\$10/month	Deposit \$100
Buffer	\$10/month	Deposit \$200
Vibratory Tumbler	\$5/month	Deposit \$50
Rotary Tumbler	\$3/month	Deposit \$40

- ◆ Deposit fees vary for each piece of equipment & reflect replacement cost. Deposit checks will be returned at the end of the rental month when the equipment is checked in with the Librarian.
- ◆ All currently paid members are eligible to rent equipment.
- ◆ Equipment must be returned by 10 a.m. at the

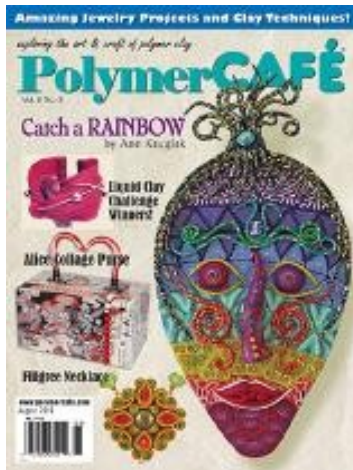
next guild meeting.

- ◆ If more than one person wants a piece of equipment, a sign-up sheet will be used.
- ◆ A late fee will be double the rental price if the equipment is not returned by the following meeting.
- ◆ Equipment is to be returned in the condition it was rented.
- ◆ A 'how to use' notebook with instructions is kept in the library & a copy will go out with the equipment. The notebook must be returned with the equipment.
- ◆ The Librarian is in charge of rentals.

*Note: The PMC kiln will not be rented but is available for use at meetings by qualified persons.*



## Mile High Members in Print



The newest Polymer Café magazine features **Maria Clark's** article on her Arizona Bracelets as well as a mask-making technique written by **Ann Kruglak**.

**Karen Sexton's** article on making "polymer posies" is in the July-August issue of Belle Armoire magazine.



## New Products



### Extreme Golden Mokume Gane by Barbara McGuire

This is Barbara's first video & was filmed in her studio with a class room style casual atmosphere. It is fast-paced and specific, featuring Barbara's popular recipe for Mokume using 22 kt real gold leaf and impression tools. All details for constructing the surface design are included in the video & several works are shown to illustrate possibilities for its use. A printed card is also included for visual and printed reference. The video is the first in a series geared toward an audience that is already familiar with working in polymer clay. It does not include basic conditioning and curing details. Future segments are being filmed that include general introduction to working with polymer clay, projects with polymer clay surface design and additional specific techniques.



Brooch by D. Kato

### Poly Paste Revisited

Kato Poly Paste is an inexpensive new product that takes the frustration out of attaching two odd-shaped surfaces. Although liquid clay could be used for this purpose, Poly Paste best assures that the pieces stay in place before and during baking, not slipping as liquid clay often does. It's especially helpful when adding trim to a pre-baked piece. Did you know Poly Paste can be colored using oil paints or alcohol inks? Tip: be sure to stir the paste well to activate and thin it a bit. It can be applied with a toothpick or small flat brush.

## *New Learning Opportunities*

**www.Craftedu.com**

Donna Kato has expanded her reputation as an artistic innovator by launching [www.craftedu.com](http://www.craftedu.com), an exciting and varied collection of on-line classes. Working with her husband Vernon & using specially written software, Donna has devoted many months developing this unique browser based, state of the art platform which offers rich and robust audio and visual learning opportunities. Along with the classes, the site offers free basic tutorials and a frequently up-dated blog featuring new classes & artists.

The classes are taught by notable artists from European countries as well as the U.K. and U.S. and cover a wide range of crafts, including beading, felting, paper arts, drawing, color theory and Photoshop applications. Each class has a video preview given by the artist which specifies tools and materials required as well as up-close pictures of the projects. Single classes vary in price from \$5 to \$50. Each class can be viewed 15 times within a 120 day period and most come with a pdf handout which can be printed.

The free tutorials include basic polymer clay skills such as clay conditioning, Skinner blends, jelly roll, striped loaf and bullseye canes. I watched the "Overview of Needle Felting" and came away with a good understanding of the tools, materials and techniques involved in this craft.

The accompanying blog offers interesting information about the artists and is updated frequently. Links to the artists' websites and blogs provide opportunities for nearly endless further exploration.

For crafters with responsibilities or budget that doesn't support the tuition of artist workshops, these classes offer relatively inexpensive opportunities to learn at home from outstanding artists. So browse through the class list & begin putting pennies in the piggy bank so you can take advantage of this new and promising learning opportunity. KS



*Looking for Inspiration? Try these websites ...*

<http://www.ejrbeads.co.uk/>

<http://artbeadscene.blogspot.com/>

<http://www.theartsmap.com/>

<http://atclindab.blogspot.com/>

<http://purpledoorart.com/>

## *What's new? Ping Pong Ball Beads!*



Valerie Aharoni posted pictures of her more elaborately embellished ping pong ball beads and her website:

<http://valerieaharoni.com/2009/05/inspiration-sources.html>

Several years ago the Metro Detroit PC Guild had a "bodacious bead" swap & our former MHPCG president Diane Luftig, then a member of the Detroit group, showed us her strand of unusual and large creations. She said one difficulty was finding something on which to form the beads, since the weight of solid beads was a problem. More recently, my Yahoo group shared ideas for making beads on ping pong balls. The questions of safety when heating plastic was discussed & Garie Sim, a polymer artist in Singapore, provided the following information: There are two kinds of ping pong balls : a) Celluloid , which is based on cellulose nitrate and b) PVC which is a thermo plastic polymer. To determine which type, cut open the ping pong ball. Celluloid balls have a plastic membrane that is very thin & you'll get a strong plastic glue smell. The PVC balls have thicker membranes. Although you can use either, the Celluloid balls distort during baking and if not vented properly before covering with clay may explode! For safety reasons, the PVC balls are best! To create the bead, poke holes in opposite sides of a PVC ball and cover with a sheet of #3 or #4 clay. The covering must be sealed tightly to protect ball from melting.

Decorate & bake following manufacturer's directions. Garie works with children & has used the forms for making animals as well as beads.



<http://www.garieinternational.com.sg/clay/pinponballs.htm>

## *A New Look for Buna Cord*

Are you weary of the regulation black buna cord? Try sponging on Lumiere acrylic paint for a metallic finish that better coordinates with your polymer pendants. Let the paint dry and heat set it in the oven about 5 minutes. You can mix colors for an interesting effect. Since Lumiere was developed as a fabric paint, it stretches with the buna, thus bonding permanently. California artist Dottie McMillan orders her buna from Cabela's. It's actually duck decoy cord which comes in 500 ft. roll for \$14.99. [www.cabelas.com](http://www.cabelas.com) Tina G. reports it can purchased locally at Bass Pro.

## *MHPCG Board*

President: Peg Harper  
Summer President: Clare Pramuk  
Vice President: Susan Mueller  
Secretary: Roseanne Thompson  
Treasurer: Helen McKee  
Librarian: Tina Gugeler  
Program/Facilities: Debra Wozniak  
Webmaster: Janice Calm  
Newsletter Editor: Karen Sexton

## *Calendar*

July 24th Clay Day  
(Beware—there are 5 Saturdays in July;  
we meet on the 4th Sat. of each month)

August 28th Clay Day

September 25 Clay Day

Jana Roberts Benzon Workshop  
October 16th & 17th

## *Special Event:*

Plan to attend our "Meet the Artist" reception for Jana Roberts Benzon on Friday evening, 5 to 7 p.m. at the Hampton Inn, 137 Union, Lakewood, Colorado. Jana will be presenting a mini demo and will have her jewelry displayed for perusing and purchasing. And yes, there will be refreshments! We hope to see you there!

*Thanks to everyone for making our 2010 Retreat a great weekend, filled with friendship, creativity and fun!*

