



# Mile High Polymer Clay Guild Newsletter

## Spring 2012

### President's Letter

Happy Spring, Everyone (or is it summer?)

With this new, warmer season come lots of new projects and a new fiscal year for our marvelous group so let me get started here.

In April we have our spring bead swap, the Laurie Mika two-day workshop and annual elections for board positions. The swap and workshop are both filled. Elections and the actual swap will take place at our monthly meeting where you'll also see some show-and-tell from the LMWS. We have a slate of candidates for election which will be confirmed at the April meeting. Please be there to cast your vote and welcome these generous new officers who have chosen to share their time and talents to make our guild exciting and run smoothly.

Beginning now, you can pay your dues for the new guild year. From now until July first, when you pay your dues you'll receive our nifty new membership card which will entitle you to discounts at places like JoAnne and local bead shops. Keep in touch and let us know where you find this card honored. We want to trade at those shops!

***Also, thanks to our healthy bank balance, we've been able to reset dues at \$15 for all those who renew their membership before July 1st. This is a 50% discount for those of us who consider Mile High to be our home guild. Associate dues will remain \$15.***

Our spring retreat is set for June 1st and 2nd. You'll find details and registration inside this newsletter. As you may know, our January silent auction proceeds are dedicated to this event and since we had a great outcome from that, we're able to have our meals purchased and delivered to the church and our goodie bags will indeed be stuffed. Numbers are limited because of space so register now!

You may have noticed our increased presence on Facebook and our own "wall" there. We also have a new website created and being fine-tuned by our own Laura

Schiller. Keeping watching for it to be unveiled and get your biography and pictures in to Laura for galleries. She's even going to open a Flick'r page for us!

Marian Gurnee has the color recipe kits ready to sell and will be posting them on Etsy right away. There will be a link to that on our new website.

Thanks to a generous donation from one of our dear members we've been inspired to create a new event for the fall. While that seems to be in the distant future, you'll want to know about it now so that you can prepared to donate and sell your work and purchase work from other members. Over the years we've had requests from the church community where we meet to open our doors to sales. For those of us who sell our work, this will be an opportunity to share with that community and our own regular patrons, give them a good price and contribute to the guild in support of our Fall Make 'n Take event. We'll have an area set aside for pieces you choose to donate outright and tables for you to set up to display and sell your work to each other and our guests. You may donate a share of your proceeds to the guild or purchase work from your fellow guild members. We'll have a cashier area for customer check out with credit / debit cards welcomed. More details will be forthcoming in the next newsletter. This will take place at our usual September meeting time so it won't mean an extra day out of your valuable time. Start creating, completing your pieces and saving your pennies for this exciting opportunity.

I want to thank you for allowing me to be your president these past four years. I also want to promise you that I'm not going anywhere! I'm looking forward to sharing time with you socially, presenting demonstrations and being your public address system when it's needed (and sometimes when it's not).

Peg



The old saying 'time flies' certainly seems true this year ! It doesn't seem possible that it's time for our guild year to end & a new one to begin. We owe sincere thanks to our out-going President, Peg Harper, for providing leadership, enthusiasm and inspiration during the past four years. Peg's admirable artistic talents along with her personal warmth & creative energy have made her beloved to us all. Thank you, Peg!

We also owe thanks to Rosanne Thompson & Helen McKee, for serving as Secretary & Treasurer these past two years. They have fulfilled their responsibilities with admirable skill & have added importantly to the Board.

### Election of Officers

The following slate of officers will be on the ballot at the April 2012 Clay Day election. If you are interested in running for one of the offices, please contact Peg Harper. Job descriptions are in the By-Laws in the MHPCG.org members' only section.

President: **Clare Parmuk**  
Vice President/Membership: **Susan Mueller**  
Secretary: **Kathy Ham**  
Treasurer: **Tina McDonald**

The MHPCG Board of Directors is comprised of the elected officers (Executive Board) and the appointed Standing Committee Chairs: Librarian, **Tina Gugeler**, Program, **Debra Woznick**, Newsletter Editor, **Karen Sexton**, and Webmaster, **Laura Schiller**. (We're very fortunate to have Laura assuming the post of Webmaster. She has many good ideas, much ability & know-how, and a husband who is a computer professional. Welcome, Laura!)

*Our new year begins June 1st and dues are due at that time. If your check is postmarked on or before July 1st, you may renew your dues for a one-time bargain price of \$15.00! Don't wait! Mail your check made out to MHPCG to Sue Mueller, 20 West Ranch Trail, Morrison, Colorado 80465. Marian Gurney has generously prepared membership cards which some Denver-area businesses will honor with a discount.*





## Exploring the Rainbow With Tina Holdman

### NEW AGE TWO

This is the second collection of color recipes that were inspired from a new age calendar collection of faeries and such. Once again the colors are mostly saturated and around a mid tone level of color. This is also a collection that I found that I really loved some of the colors together but not other combinations. The Lighter Apricot really contrasts with all but the Sunshine Yellow. The Deeper Purple Blue is one of my most favorite colors that I have made in the purple/blue shades. The

green is a brighter shade despite buffering it down just a little bit. If you love green, this is no doubt a shade you will probably adore, it is clean and crisp. So get out your clay, dig out your kemper cutter and start mixing!

#### #1 Sunshine Yellow

4 parts Premo White  
1 part Premo Zinc Yellow  
1 part Premo Ecru

#### #4 Deeper Purple Blue

3 parts Premo Ultramarine Blue  
1 part Premo Purple  
1 part Premo Black  
1 part Premo White

#### #2 Lighter Apricot

4 parts Premo Ecru  
4 parts Premo Cadmium Yellow  
4 parts Premo White  
1 part Premo Orange

#### #5 Midtone Cerise

4 parts Premo Alizarin Crimson  
1 part Premo Orange  
1 part Premo White  
1 part Premo Cadmium Red

#### #3 Buff Grass Green

4 parts Premo Green  
4 parts Premo Turquoise  
2 parts Premo Cadmium Yellow  
1 part Premo White  
 $\frac{1}{2}$  part Premo Black

#### #6 Dusky Grape

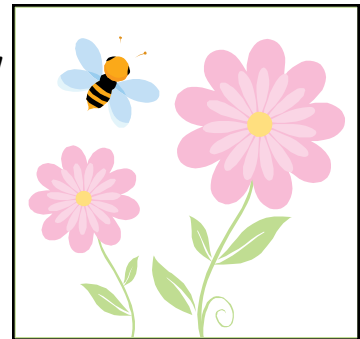
4 parts Premo Purple  
4 parts Premo White  
3 parts Premo Ultramarine Blue  
3 parts Premo Turquoise  
2 parts Premo Burnt Umber  
1 part Premo Cobalt Blue

## MHPCG Facebook Update

By Laura Schiller

We have been revamping the Mile High Polymer Clay Guild Facebook site (say that ten times real fast!). We have changed from a closed to an open group. However, I still see we are getting requests to join and when I see they are from someone in the guild I okay them as 'fast as my little legs can carry me!' If you have any problems trying to access the site or finding it on Facebook, feel free to contact me (laura@lauraseggs.com).

Tina Gugeler and I have been posting our latest and some of the guild's older photos. I have also changed the main photo. You might see some familiar faces in the photo I have there. It was taken at a retreat in our recent past. I am hoping to change this photo out as we grow in membership and as faces change too (groan ... hate getting older!)



You can access the site at: Mile High Polymer Clay Guild (group) <http://www.facebook.com/#!/groups/117605238269052/>

### ETC from your editor ...

It's always amazing to me how many good tips are shared during informal conversations each Clay Day. Saturday, I picked up these treasures:

- ◆ We were admiring Tina G's necklace, She confessed the wire was actually a discarded piece of guitar wire! She had folded each of the ends over, finishing them with a black polymer clay knob. The ends easily hooked together. What an idea! I came home and e-mailed my musician son, asking him to send me his worn-out guitar strings!
- ◆ Marian's beads for the swap are gorgeous! When we admired the UltraDome resin finish, she said she'd found a solution for the product's frustrating tendency to shrink away from the edges. Here's her tip: She outlines the piece first—running a bead of the resin around the edges; bakes. Then adds a final coat to fill in the middle & overlap the first coat. Clever!
- ◆ As we left the meeting, Maggie invited us to view her watercolor paintings. We were impressed! Knowing Maggie's skill with lampwork bead-making, we shouldn't have been surprised. She told us one of them would be displayed in a local show & the other had been critiqued by the Colorado Watercolor Society. Congratulations, Maggie. This is well deserved recognition. Your paintings are beautiful!



# MHPCG Spring Retreat

Friday & Saturday, June 1 & 2,  
2012

Lockwood Christian Fellowship  
1254 S. Union  
Lockwood, Colorado

## Theme: 3-Dimensional Objects d/Art

It's time to sign up for the MHPCG annual Retreat. This year we will have an open studio event focusing on 3-dimensional "Objects d'Art" (aka sculpture). Friday evening demos will present techniques and ideas. We'll send a list of suggested tools & materials with your confirmation e-mail. Please join us as we foster creativity, learn new skills, share ideas and make new friends. In other words, have fun!

### Friday

- ◆ Noon: Gather for social time & Set up work space
- ◆ 5:30 p.m. Catered Dinner
- ◆ 7:00-9:00 p.m. Demonstrations
- ◆ Friday night: bring your sleeping bag for a slumber party or Drive home & sleep in your own bed

### Saturday

- ◆ 7:30 a.m. Continental Breakfast
- ◆ 8:00 a.m. Open studio time to Create your project
- ◆ 12:30 Catered lunch & group Photo
- ◆ 1:30-3:00 p.m. Open Studio
- ◆ 3:30 p.m. Project Sharing
- ◆ Clean-up

Since this is a cooperative event, participants will be assigned to help with either set-up, clean-up or kitchen duties. You may check your preference on the form below. Space is limited to 25 participants & registrations will be taken on a first-come, first-served basis. Questions? Contact Kathy Ham@passionfruitdesigns.com


Name \_\_\_\_\_ E-mail: \_\_\_\_\_

Send check payable to MHPCG to: Sue Mueller 20 West Ranch Trail, Morrison, CO 80465


2012-13 Dues \$30 (\$15 if paid before July 1st 2012)

Retreat Registration: \$25 (includes food, special materials & GOOD TIMES)


Indicate your preference: \_\_\_ Set-up \_\_\_ clean-up (Sat p.m.) \_\_\_ Kitchen




*... and speaking of 'Three Dimensional Objects d'Art ...  
(just what do they mean by that?)*




OK, we realize that when one says "sculpture" the things that spring immediately to mind include benevolent dragons, charming animals or whimsical faeries. For this Retreat we're thinking beyond these traditional lines and are offering a few suggestions for those of you for whom sculpture projects may not appeal.



If you find that facing a lump of well-conditioned clay is daunting, consider using a ready-made armature & adding your own creative polymer embellishments. Items such as teapots, small bird houses, large alphabet letters, bottles, jars, votives, candle holders, silverware handles or even picture frames are good possibilities. Craft stores have many suitable things for covering/embellishing. Poke around your recycle bin for interesting shaped jars or bottles and stroll through thrift stores for useful & inexpensive treasures.



Select a palette of your favorite colors & use them to run a few Skinner blends, extrude some strands or strips, or build a few new canes. Look through your stash of aging canes for possibilities. Construct basic back/white checkerboard or striped loaves to use as trims. Recall the variety of techniques possible with metallic mica shifts, mokume gane blocks or inclusions. Dig out your favorite texture plates to add interest to your project. The possibilities are endless using things you have handy and applying the skills you already have.



Still stumped? Explore a few of the countless on-line tutorials and you-tube videos. Here are just a few: There are many others via "Google".



[www.skygrazer.com/polymerclay/resources/lessonlinks.htm](http://www.skygrazer.com/polymerclay/resources/lessonlinks.htm)


<http://polymerclay.craftgossip.com/>

[http://www.squidoo.com/sculpting\\_tips](http://www.squidoo.com/sculpting_tips)



<http://theminifoodblog.blogspot.com/>

<http://www.elvenwork.com/tips.html>



[www.youtube.com](http://www.youtube.com) (The search engine will lead you to dozens of polymer clay tutorials. Specify "polymer clay sculpture tutorials".)

## The Great Bead Swap of 2012! *Laura Schiller, Swapmeister*



The Swap is themed, "Spring Colors". This doesn't have to be pastels, but "Springy" in nature. Between you, me and the green aliens, I think I will be using Premo's newest pearl colors for this one. At present, we would like everyone to create 20 beads, about the size of a marble or larger. If at all possible, please create one extra bead for the guild's history.

**Deadline for signing up was the March 24, 2012 clay Day.** We will exchange beads at the April 28, 2012 meeting. If you have any questions, please free to contact Laura at: [laura@lauraseggs.com](mailto:laura@lauraseggs.com)

Members who have signed up so far include: Peg Harper, Laura Schiller, Tina McDonald, Sherilyn Dunn, Jainnie Jenkins, Dianne White, Carolyn Meyers, Barb Harper, Tina Gugeler, Sue Mueller, Nancy Lane, Tracy Rosen, Debra Woznick, Clare Parmuk, Marian Gurnee, Karen Sexton and Mary Woosley.

*The Swap Rules are available from Laura Schiller.*

Even if you aren't participating in the Swap, you may be interested in browsing through these bead tutorials:

<http://polymerclaybeads.blogspot.com/2007/02/blog-post.html>

<http://www.beadyeyedbrat.com/tutesbeads.html>

<http://www.facebook.com/polymerclay>

<http://www.instructables.com/id/How-to-Make-Polymer-Clay-Beads/>

Use the YouTube.com search engine to access countless bead-making videos.



## Coming Events

Clay Day Garage Sales are scheduled for March, April, May, & October. Our competent chairman, Marian Gurnee, urges you to bring your used arts & crafts materials, tools and clay-related items to Clay Day. Please mark prices on the things you bring. All proceeds go to MHPCG. Thanks! Remember, "One Clayer's trash is another Clayer's treasure."

**Heads up!** Begin planning toward our fall sale of outstanding polymer clay art work by our members. More details in the July newsletter.

### Clay Days:

April 28, May 26, June 23

Laurie Mika Workshop April 20 & 21

MHPCG Spring Retreat June 1 & 2

Christie Friesen Workshop October 12 & 13

## **International Polymer Clay Association Synergy 3— "Seeking Higher Ground" March 13-16, 2013 Atlanta, Georgia**

Synergy has become known as the principal and keynote conference in the polymer clay world.

IPGA invites artists to submit proposals for seminars & talks that have a "Seeking Higher Ground" focus. The talks will be open to all attendees and should be one hour long. The Seminars with smaller groups should be of sufficient weight & character to last 60-90 minutes with questions & discussion. For submission guidelines, contact Allison Gallant, Synergy3 Program Chair. Her e-mail address is: [education@theipca.org](mailto:education@theipca.org)

More information is at [www.theipca.org](http://www.theipca.org)





## Tina's Treasures By Tina McDonald

Thinking about buttons ...

How do you make buttons attachable? Please note that everything I've read says you shouldn't use polymer buttons if you need to dry clean the garment. Rather, make them removable.

If you decide you want buttons with visible holes, I'd recommend using four holes. I've found that if two holes are too close together the thread cuts right through, especially if you're using quilt thread. For consistently placed holes, use a commercial button as a template. Mother of pearl, shell or wooden buttons usually have holes spaced further apart, so both are good choices. For other options, try the big plastic craft buttons & use your needle tool at the very outside corners to get wider spacing. You can drill the hole the rest of the way quite easily after it's been baked. Yes, I know You Tube videos show turning the unbaked button over & refining the hole, but trust me, drilling afterward to clean up the hole creates much less distortion.

The shank style can be done in one step by imbedding a strong piece of wire with a loop in the button back. The shank buttons are easily removed if the item needs to be dry-cleaned. Take a tip from commercial dry-cleaners who remove buttons before cleaning & then re-attach them with safety pins. It helps to attach a little darning circle on the inside of the garment for both stability & marking where the buttons are placed.

You can attach purchased button covers to your polymer designs using cyanoacrylate glue or epoxy. These can then be slipped over plain buttons.

There are also magnetic or steel buttons that

you can sew on your clothes which will hold a polymer button to which you've glued a small magnet. Cheaper than this method is to cover jean buttons that are steel. Use a magnet & run it over the metal buttons. If they move, you're all set.

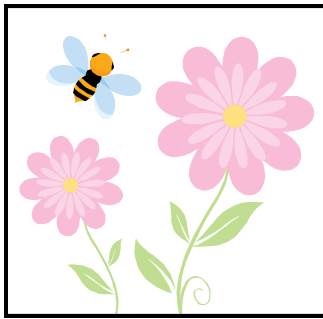
Happy Claying,

Tina

Editor's note: Buttons offer the perfect project with which to try out new color combos, use leftover canes or experiment with textures or new designs.

Our library has a good *video by Tory Hughes on making buttons*. Tory present a variety of shapes color-coordinated to different kinds of fabrics.





## More from Tina MCD ...

A friend recently invited me to join Pinterest.com. At first I thought it was just another photo album site like Flickr.com (which is another visual website I love full of pics of other people's work). Then my dear friends on Facebook informed me it is so much more. It is both a visual bookmark manager and a visual search engine of other peoples "pins" ( visual bookmarks). You can search for "polymer" and up pops up what other people have saved as "pins". Some of these are actually links to their own photos, some to flickr or etsy albums that they like, but some are links to tutorials or blogs on how to do the projects. Now if you are like me and have a zillion web bookmarks that say "polymer clay flower cane" in some form, and you are sick of having to click on every bookmark until you find the exact one you want, Pinterest is SOOOO much more helpful because the pins are actually photos of those flower canes. And you can pin from your own bookmarks as well. Here's a BIG Tip, You need to set up a board first BEFORE you pin, otherwise nothing happens. Now, I have used it for 2 days (the 2nd day the correct way) and am totally addicted to it. So if you're interested, let me know at [tlmcdonald2000@gmail.com](mailto:tlmcdonald2000@gmail.com), and I'll send you an invite to join, and if someone (or two) with a laptop & wifi can bring it to one of the clay days, I'll be happy to demo it.

For those of you who miss the days of the the craft shows on TV, here are a few online alternatives

[www.mycraftchannel.com](http://www.mycraftchannel.com)

<http://www.crafttv.net/>

<http://www.cool2craft.com/craft-tv-channel/>

<http://www.diycraftvideos.com/>

<http://www.youtube.com/user/ksproductionstv>

<http://craftedu.com/>

*If you have cable or antenna service, Create TV has a variety of craft and cooking shows on comcast channel 248 or digital antenna 6.3.*