

## MHPCG Apr-June 2016 NEWSLETTER

### Mile High Polymer Clay Guild

#### The President's Address:

##### President's Letter



Hi everyone,

I am writing for Clare. She has had a busy time with family and flooding in Louisiana this summer. I hope she keeps everyone high and dry (and healthy)

Tina Gugeler

### **GUILD NEWS**

**Library News:** no new purchases.

### **FUTURE EVENTS:**

**Possible mini workshop by Tina Gugeler on surface techniques with Pearl Ex powders, Oct dates pending.**

**Current swap is the Russian Nesting dolls due at the Oct meeting**

**Fall retreat coming , Nov 11-12,2016**

### **Interesting web sites/videos**

Soutache Kaleidoscope Cane | Polymer Clay Tutorial

<https://www.youtube.com/watch?v=p4CdiO9Tv2M>

Polymer Clay Soutache | Tutorial | English version archidee archidee

<https://www.youtube.com/watch?v=dN259LUr8kY>

Teresa Pandora Salgado

[https://www.youtube.com/channel/UCsfRvtOA9y7qrP1g\\_JR6zzA](https://www.youtube.com/channel/UCsfRvtOA9y7qrP1g_JR6zzA)

Teresa Pandora Salgado,Caning Master Class with Full Detail

<https://www.youtube.com/watch?v=YZwJqR1yXuU&feature=youtu.be>

Teresa Pandora Salgado,Easy Caning with Canebenders

[https://www.youtube.com/watch?v=8mot6\\_7Euj0](https://www.youtube.com/watch?v=8mot6_7Euj0)

DIY Polymer Clay flower cane - kaleidoscope technique

<https://www.youtube.com/watch?v=-BXNZTIIQD8>

Polymer Clay Tutorial - Blended Ceramic Effect - Lesson #31

[https://www.youtube.com/watch?v=i8s\\_kMOOKLg](https://www.youtube.com/watch?v=i8s_kMOOKLg)

## Exploring the Rainbow with Tina Holdman

### COLOR RECIPE COLLECTION #46--- Ice Pastels #1

This is a collection of six ice pastels to add to your palette. An ice pastel is a very light pastel, sometimes almost so light it looks like a tinted white. There are several applications and uses for colors that are this light. First, if you are working with regular pastel and mid tone colors and need something even lighter, an ice pastel may well give you the contrast you need. Second, if you are working on a color combination and need something less glaring than white, an ice pastel can give you some nice splash, but without the glare. And last, if you want to give a project a professional touch, an ice pastel brings an elegant finish to a project. Think about using an ice pastel instead of a white or a cream in your work, it makes for something a little different and will help put the colors in your project together. Note: You will use a lot of white clay when you mix these colors, especially with the saturated reds and blues.

Premo colors you will need to mix this collection are: White, Ecrú, Wasabi, Sunshine, Turquoise, Orange, Blush, Purple, Periwinkle, Cobalt and Pomegranate.

#### #1 Light Lime Ice

7 parts Premo White

½ part Premo Wasabi

1/8 part Premo Ecrú

1/8 part Premo Sunshine

#### #2 Buffered Turquoise Ice

8 parts Premo White

¼ part Premo Turquoise

1/16 part Premo Ecrú

#### #3 Strawberry Ice

24 parts Premo White

¼ part Premo Ecrú

1/8 part Premo Orange

1/8 part Premo Blush

1/8 part Premo Pomegranate

#### #4 Grass Green Ice

6 parts Premo White

¼ part Premo Turquoise

1/8 part Premo Wasabi

#### #5 Grape Ice

6 parts Premo White

1/8 part Premo Purple

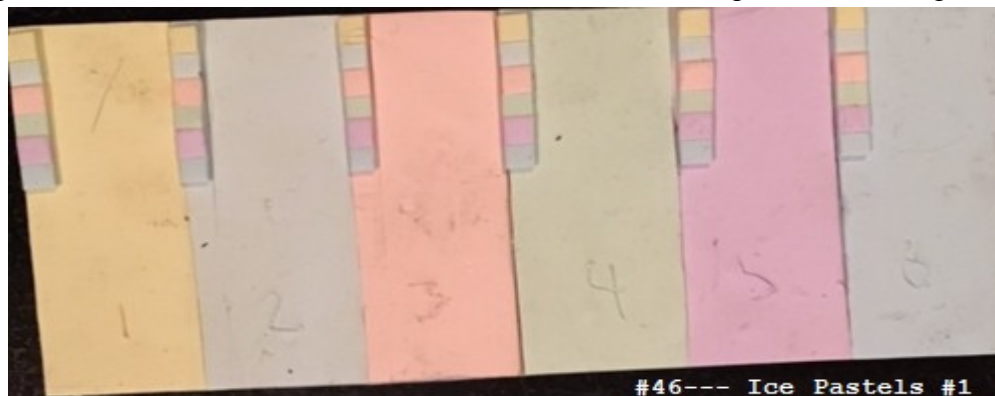
1/8 part Premo Periwinkle

#### #6 Sky Blue Ice

16 parts Premo White

¼ part Premo Cobalt

1/8 part Premo Turquoise



#### **MHPCG Board members:**

President: Clare Pramuk

Vice President: Sue Mueller

Secretary: Kathy Ham

Treasurer: Sherilyn Dunn

Swapmeister/Historian: Diana Aungst

Programs: Debbra Woznick

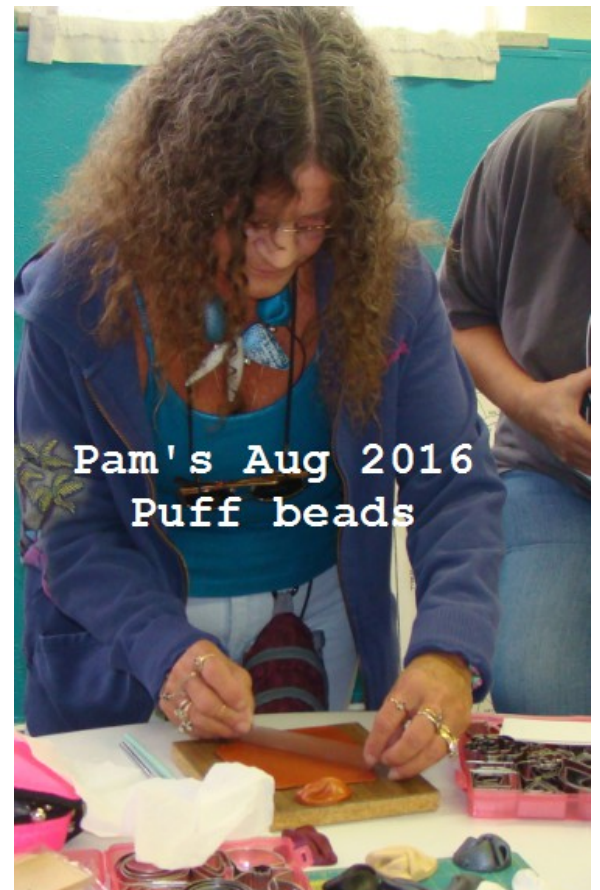
Newletter Editor: Tina Gugeler

Library: Tina Gugeler, and Stan Estoll

The Store/Equipment: Kari Crist



Kashia's Butterfly  
July 2016 demo



Pam's Aug 2016  
Puff beads

Check out the new MHPCG aprons made by Cheryl Row .  
Order yours now!



Maria

Deb

Tracy

Julie

New Aprons Aug 2016